

20  
22

# Instruction Guide



**GPHANTOM FACE FB**



# LEARN. PRACTICE. IMPROVE.

Thank you for choosing Gphantom!

We are a company specialized in the development of solutions for medical training. If you want a specific model for your training, contact us. Here we will help you to handle and optimize the durability of your product.





# ABOUT YOUR PRODUCT

- 1** For longer durability, we recommend the use of needles with thickness equal to or less than 21G. During training, according to the execution of the procedures, needle tracks may remain in your Gphantom for up to two days. For better use of this material recovery technology, leave your product in a fresh place, sheltered from the sun, for 48 hours after use;
- 2** Gphantom Face FB was developed to offer a human face simulation with aesthetic filler materials, to help skills development for facial mapping and ultrasound-guided aesthetic procedures;
- 3** This product is also indicated for training skills, such as transducers positioning in anatomical structures for facial mapping, facial aesthetic procedures with needles or real time-guided cannulas, puncture or guided biopsy on the face, anatomy of risk areas, in addition to image adjustments and echogenic characteristics of facial aesthetic products (hyaluronic acid, collagen bio stimulators, support threads, PMMA, silicone oil, among others that you want to inject and evaluate);
- 4** Over time, injected substances can be expelled by the material.







# HANDLING AND MAINTENANCE

- 1 Always keep your product in the storage case and in a fresh place, sheltered from the sun.

**Note:** Expose your Gphantom to temperatures above 30°C (86°F), for long periods, can cause deformations and loss of properties;

- 2 For training, remove only the packaging lid, keeping it in the original base;

- 3 After training, clean the product with a paper towel, removing excess gel for ultrasound and, then, wash it under running water without removing it from the base.

**Note:** Do not store your Gphantom with excess gel, it may cause bad smell, thus reducing product durability.

- Do not use detergents or sponges, as these damage the product!

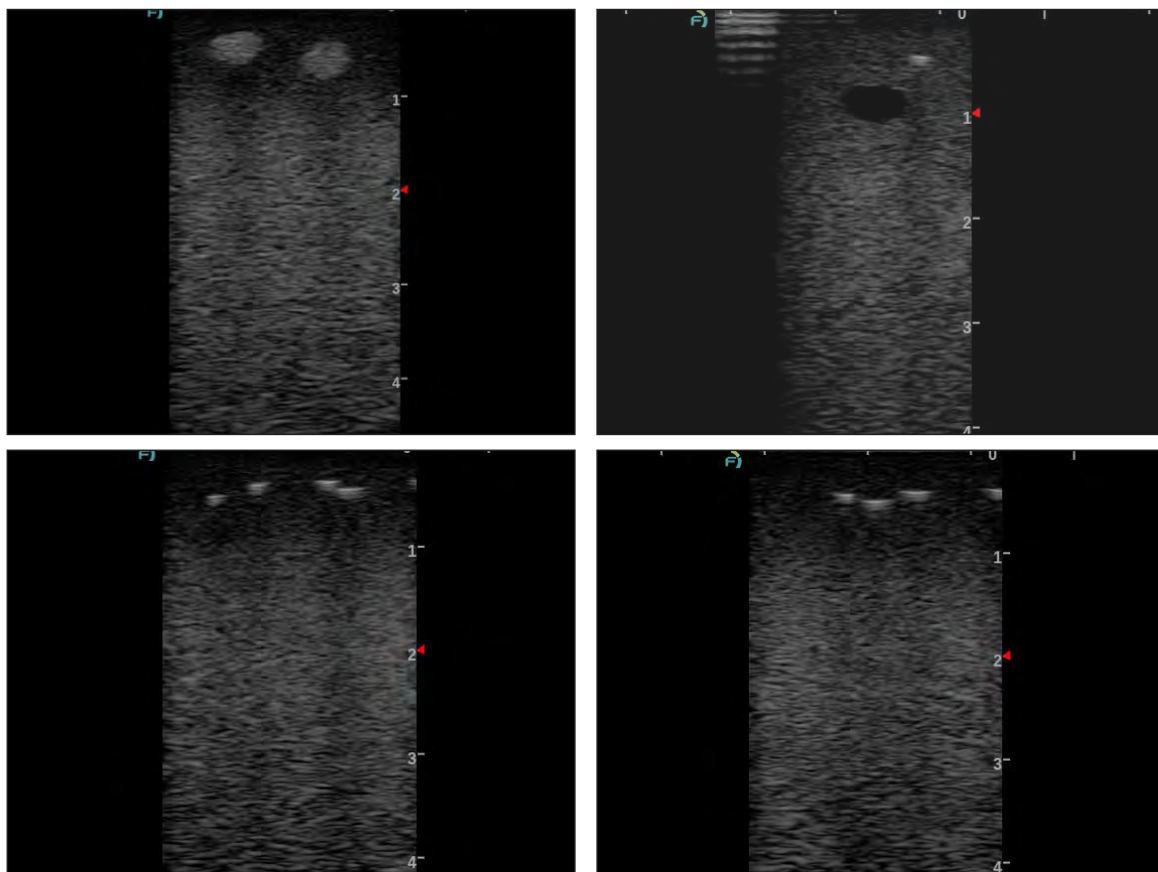
- 4 After cleaning, store your Gphantom according to instructions contained in item I;

- 5 This is a product for educational purposes, intended ONLY, for medical training. In case of doubt, contact us through our relationship channels.



# SPECIFICATIONS

PRODUCT CODE PBD050510

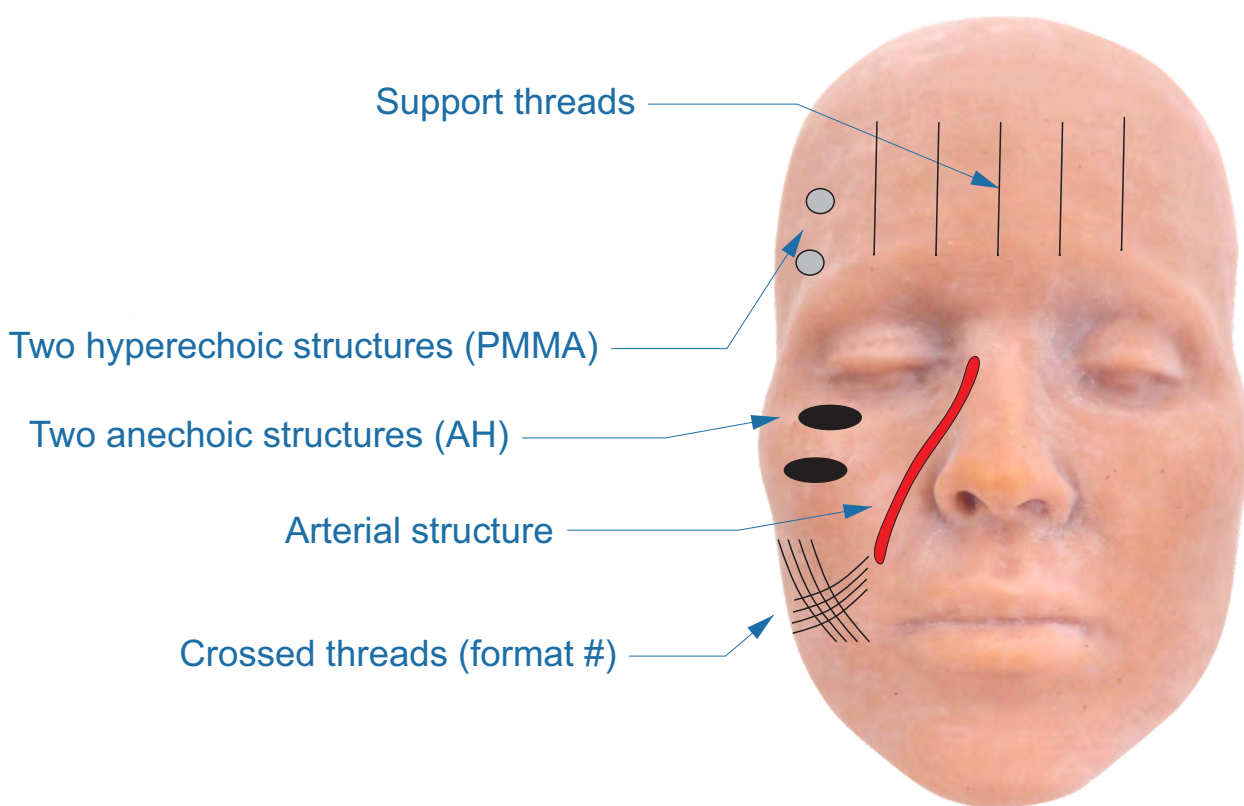


B mode ultrasound images of Gphantom Face FB<sup>[1]</sup>.

# SPECIFICATIONS

PRODUCT CODE

PBD050510



Representation of internal structures from Gphantom Face FB<sup>[2]</sup>.

[2] The right side of the model is intended for material injection training and, therefore, does not contain any previously simulated structure.



## EXPERT FEEDBACK

"Cristal, as called by me, Gphantom Face offers a realistic physical simulation of the human face with anatomical structures and aesthetic fillers that help in the development of skills for facial mapping and ultrasound-guided facial aesthetic procedures. Ideal for bridging the gap between theory and clinical training on patients. With simulation, I hope that users can develop a precious learning curve, with solid basis for their excellence in the clinical practice of Facial Ultrasonography".

**Fernanda Bezerra**







**LEARN. PRACTICE. IMPROVE.**

**For any questions or requests, contact us:**



+55 16 98848-2468



[contato@gphantom.com.br](mailto:contato@gphantom.com.br)