

**2021**

# **GPHANTOM BREAST**



*Gphantom*

**INSTRUCTION  
GUIDE**



Thank you for choosing Gphantom!

We are a company specialized in the development of solutions for medical training. If you want a specific model for your training, contact us. Here we will help you to handle and optimize the durability of your product.

Your Gphantom Breast is eligible for our Fidelity Program.

Consult conditions.



# ABOUT YOUR PRODUCT

I. We recommend the use of needles with thickness equal to or less than 21G. During training, according to the execution of the procedures, needle tracks may remain in your Gphantom for up to two days. For better use of this material recovery technology, leave your product in a fresh place, sheltered from the sun, for 48 hours after use;

II. We advise movements up to 30 degrees relative to product surface, using needles as mentioned in the previous item. Avoid very long movements (wide angle) after needle insertion, because may decrease the lifespan of your model;

III. It's not recommended injecting or removing any types of materials from your Gphantom during utilization. If you have this need, contact us;

IV. The Gphantom Breast was developed for ultrasound-guided biopsy training and imaging diagnosis. It has eleven internal structures with six different echogenicity properties. This configuration allows the fine needle biopsy (FNA) training and other procedures, such as CORE biopsy.



# HANDLING AND MAINTENANCE

I. Always keep your product in the storage case and in a fresh place, sheltered from the sun.

**Note:** Expose your Gphantom to temperatures above 30°C (86°F), for long periods, can cause deformations and loss of properties;

II. For training, remove only the packaging lid, keeping it in the original base;

III. After training, clean the Gphantom Breast with a paper towel, removing excess gel for ultrasound and, then, wash it under running water without removing it from the base.

**Note:** Do not store your Gphantom with excess gel, it may cause bad smell, thus reducing product durability;

Do not use detergents or sponges, as these damage the product!

IV. After cleaning, store your Gphantom according to instructions contained in item I;

V. The Gphantom Breast is a product for educational purposes, intended, ONLY, for medical training. In case of doubt, contact us through our relationship channels.





# SPECIFICATIONS



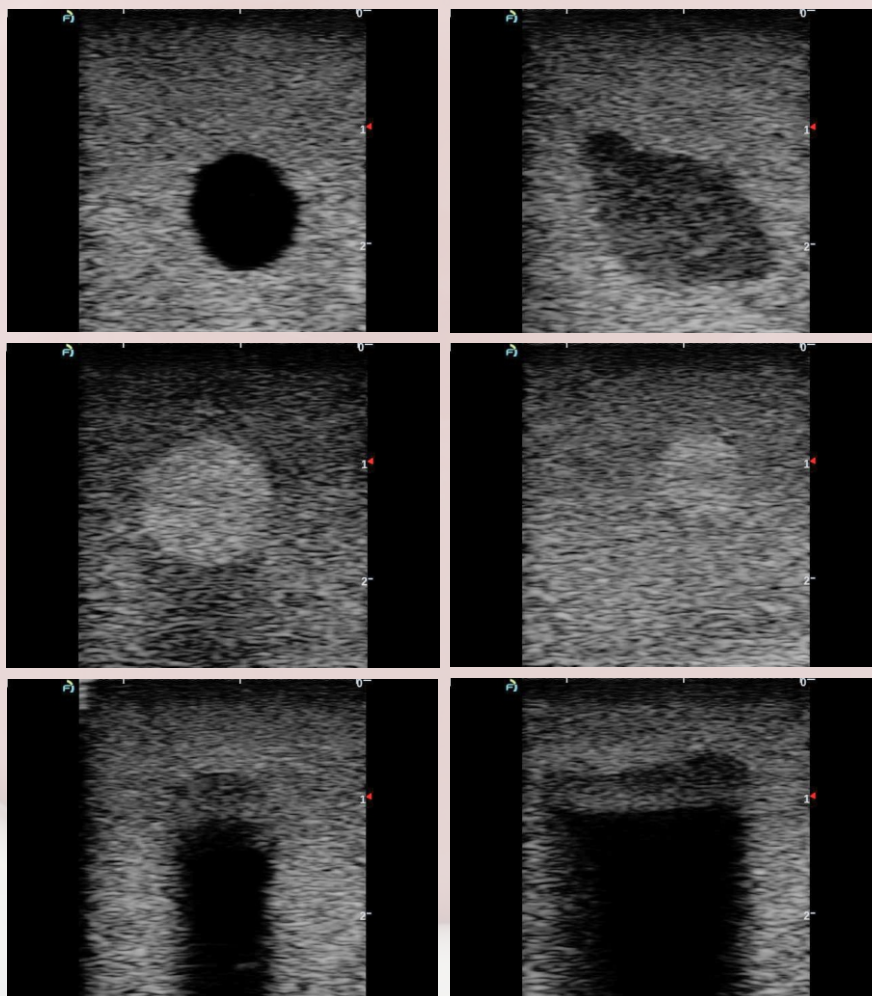
Product code	PBD050501
--------------	-----------

Approximate weight (without packaging)	400 g
--	-------

Length	14 cm
--------	-------

Height	6,5 cm
--------	--------

Width	13 cm
-------	-------



B mode ultrasound images of Gphantom Breast<sup>[1]</sup>.



[1] Images may contain minor changes.

# SPECIFICATIONS



## Inclusions positioning: random

Type of masses	Shape	Number of masses	Size	Color
Isoechoic + shadows	Regular	1	7 - 11 mm (diameter)	Yellow/brown
Hypoechoic	Regular	2	7 - 11 mm (diameter)	Green
Hypoechoic	Regular	1	4 - 8 mm	Green
Hyperechoic	Regular	1	7 - 11 mm (diameter)	White
Hyperechoic	Regular	1	4 - 8 mm	White
Anechoic	Regular	2	7 - 11 mm (diameter)	Red
Anechoic	Regular	1	4 - 8 mm	Red
Isoechoic + shadows	Non-regular	1	13 - 20 mm	Yellow/brown
Hypoechoic	Non-regular	1	13 - 20 mm	Green





*Gphantom*

**For any questions  
or requests, contact us:**



+55 16 98848-2468



contato@gphantom.com.br