

# INSTRUCTION GUIDE



**GPHANTOM FACE FB**

LEARN. PRACTICE. IMPROVE.

# INSTRUCTION GUIDE

Thank you for choosing **Gphantom!**

We are a company specialized in the development of solutions for medical training. If you want a specific model for your training, contact us. Here we will help you to handle and optimize the durability of your product.

Your **Gphantom Face FB** is eligible for our Fidelity Program.

Consult conditions.



LEARN. PRACTICE. IMPROVE.

# ABOUT YOUR PRODUCT

Gphantom Face FB was developed to offer a simulation of the human face, with anatomical structures and aesthetic fillers to assist in the development of skills for face mapping and ultrasound-guided aesthetic facial procedures.

Thus, Gphantom Face FB is indicated for manual skills training, such as wielding the linear transducers on the anatomical structures for face mapping, aesthetic facial procedures with needles or cannulas guided in real time, puncture or guided biopsy on the face, anatomy of risk areas of the face, as well as image adjustments and echogenic characteristics of facial aesthetic products (hyaluronic acid, collagen biostimulators, support wires, PMMA, silicone oil, among others that you wish to inject and evaluate). Over time, the injected substances can be flushed out of the material.

Our needle mark recovery technology enables your Gphantom to recover up to 99% of the needle marks within 48 hours after training, when using needles with thicknesses of 21 G or less. For the best use of this needle mark recovery technology, we recommend that you leave your product in a cool place, out of the sun, for 48 hours after each use;

We recommend movements of up to 30 degrees in relation to the product surface, using needles such as the ones mentioned in the previous item. Avoid very long movements (large angles) after needle insertion, as these may shorten the life of your model. In addition, we do not recommend injecting or removing materials from your Gphantom during use.

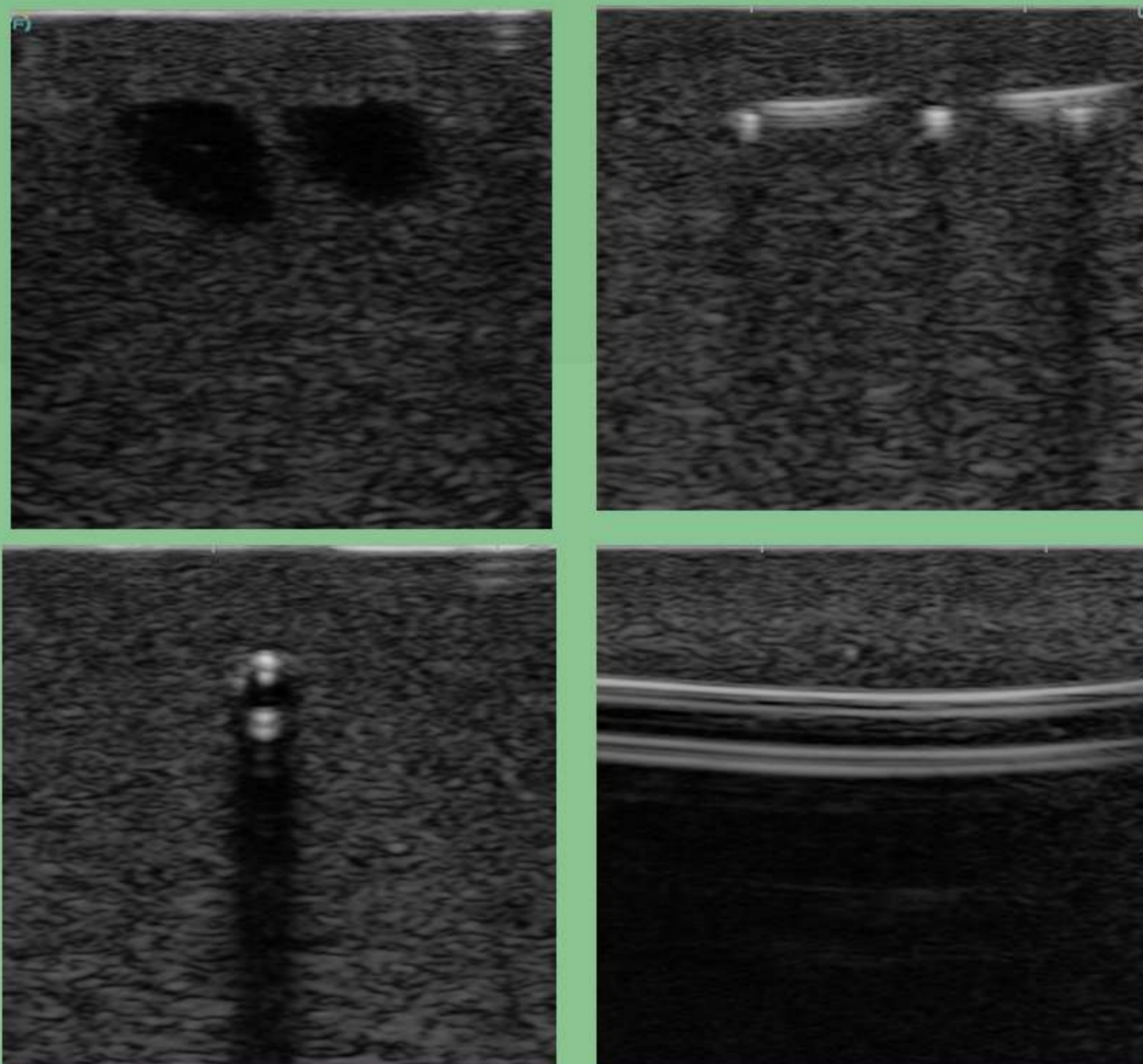
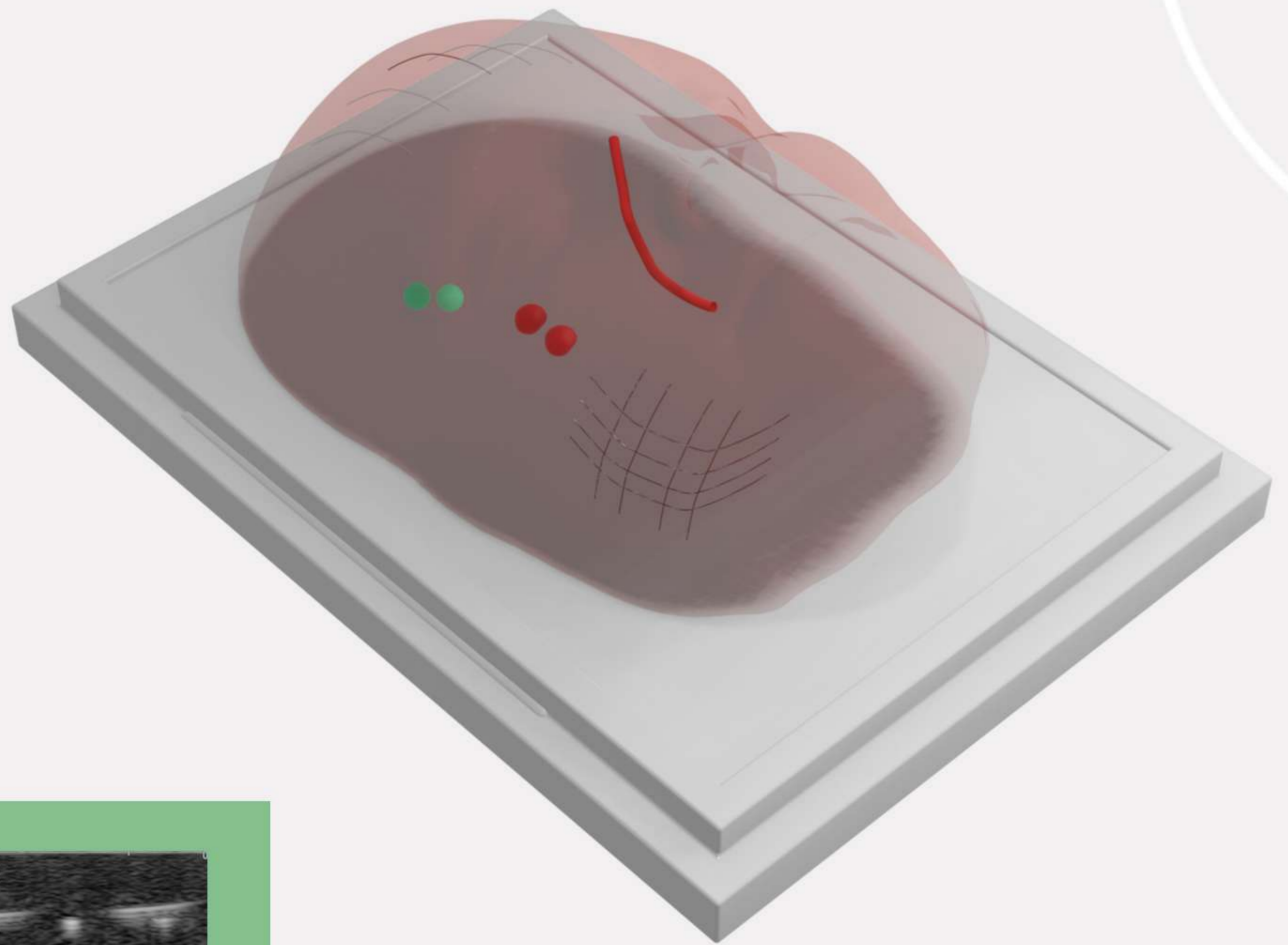
If you have such a need, please contact us.



# ABOUT YOUR PRODUCT

INTERNAL STRUCTURES

-  **Artery**
-  **Nylon threads**
-  **Hyperechoic**
-  **Anechoic**



B mode ultrasound images of Gphantom Face FB.

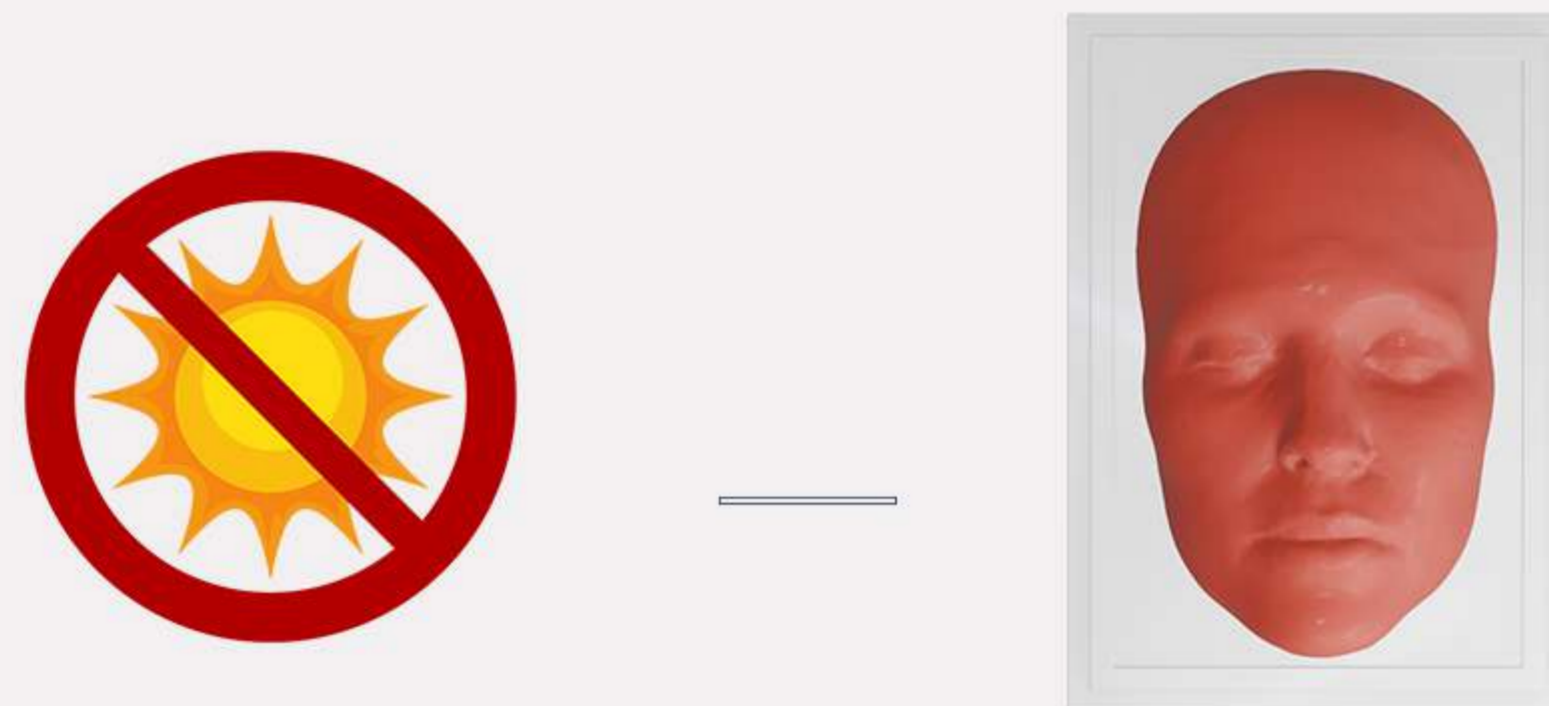
PRODUCT CODE

PBD050510



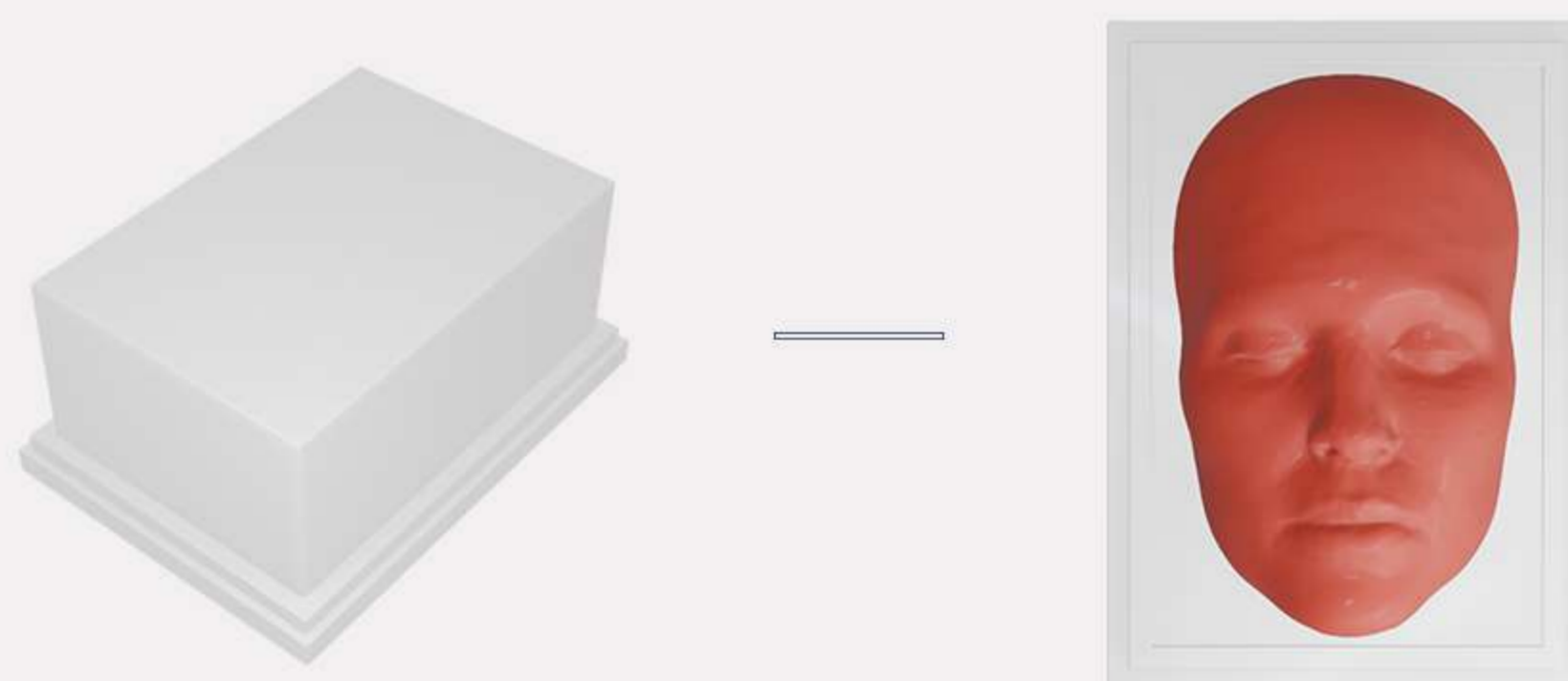
# HANDLING AND MAINTENANCE

- ① Always keep your product in a fresh place, sheltered from the sun.

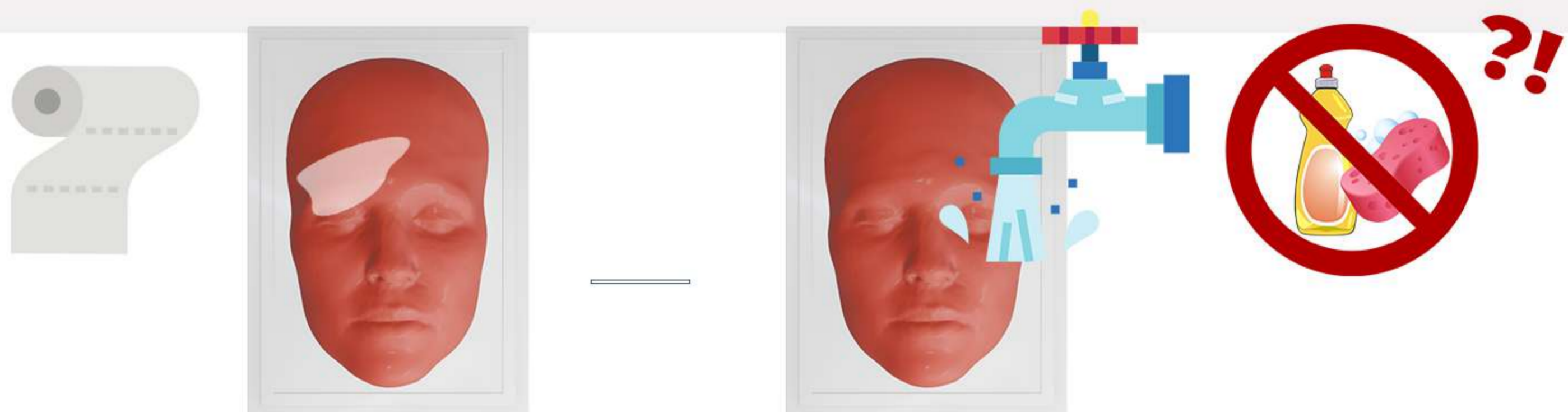


OBS: Expose your Gphantom to temperatures above 30°C (86°F), for long periods, can cause deformations and loss of properties;

- ② For training, remove only the packaging lid, keeping it in the original base;



- ③ After training, clean the product with a paper towel, removing excess gel for ultrasound and, then, wash it under running water without removing it from the base.



Do not store your Gphantom with excess gel, it may cause bad smell, thus reducing product durability.

Do not use detergents or sponges, as these damage the product!

# HANDLING AND MAINTENANCE

- ④ After cleaning, store your Gphantom according to instructions contained in item I;
- ⑤ Gphantom Face FB is a product for educational purposes, intended, ONLY, for medical training. In case of doubt, contact us through our relationship channels.

# CONTACT US

For any questions or requests, contact us:



[contato@gphantom.com.br](mailto:contato@gphantom.com.br)



+55 1699848-2468