

# INSTRUCTION GUIDE



**GPHANTOM HOF**

LEARN. PRACTICE. IMPROVE.



# INSTRUCTION GUIDE

Thank you for choosing **Gphantom!**

We are a company specialized in the development of solutions for medical training. If you want a specific model for your training, contact us. Here we will help you to handle and optimize the durability of your product.

Your **Gphantom HOF** is eligible for our Fidelity Program.

Consult conditions.



LEARN. PRACTICE. IMPROVE.



# ABOUT YOUR PRODUCT

Gphantom HOF has been developed to provide a dedicated simulation for orofacial procedures with aesthetic fillers, thus assisting in the development of skills for facial mapping and ultrasound-guided aesthetic procedures;

This product is indicated for manual skills training, such as wielding the linear transducers on the anatomical structures for facial mapping, facial aesthetic procedures with needles or cannulas guided in real time, puncture or guided biopsy on the face, as well as image adjustments and echogenic characteristics of the facial aesthetic products (hyaluronic acid, collagen biostimulators, support wires, PMMA, silicone oil, among others that you wish to inject and evaluate).

NOTE: Over time, the injected substances can be expelled by the material.

Our needle mark recovery technology allows your Gphantom to recover up to 99% of the needle marks within 48 hours after training, when using needles with thicknesses of 21 G or less. For better use of this needle mark recovery technology, we recommend that you leave your product in a cool place, away from sunlight, for 48 hours after each use;

We recommend movements of up to 30 degrees in relation to the product surface, using needles such as the ones mentioned in the previous item. Avoid very long movements (large angles) after needle insertion, as these may shorten the life of your model. In addition, we do not recommend injecting or removing materials from your Gphantom during use.

If you have such a need, please contact us.

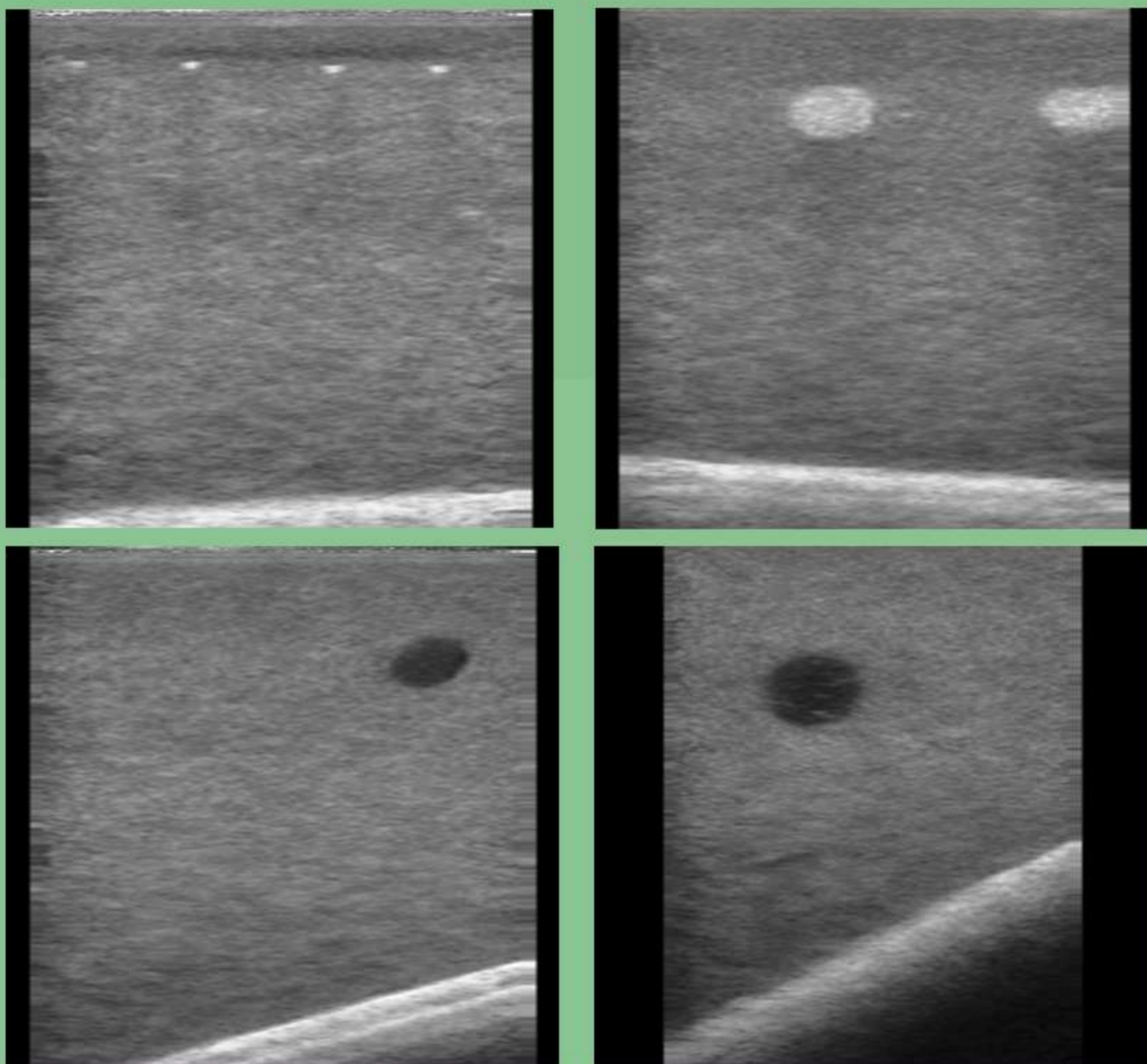
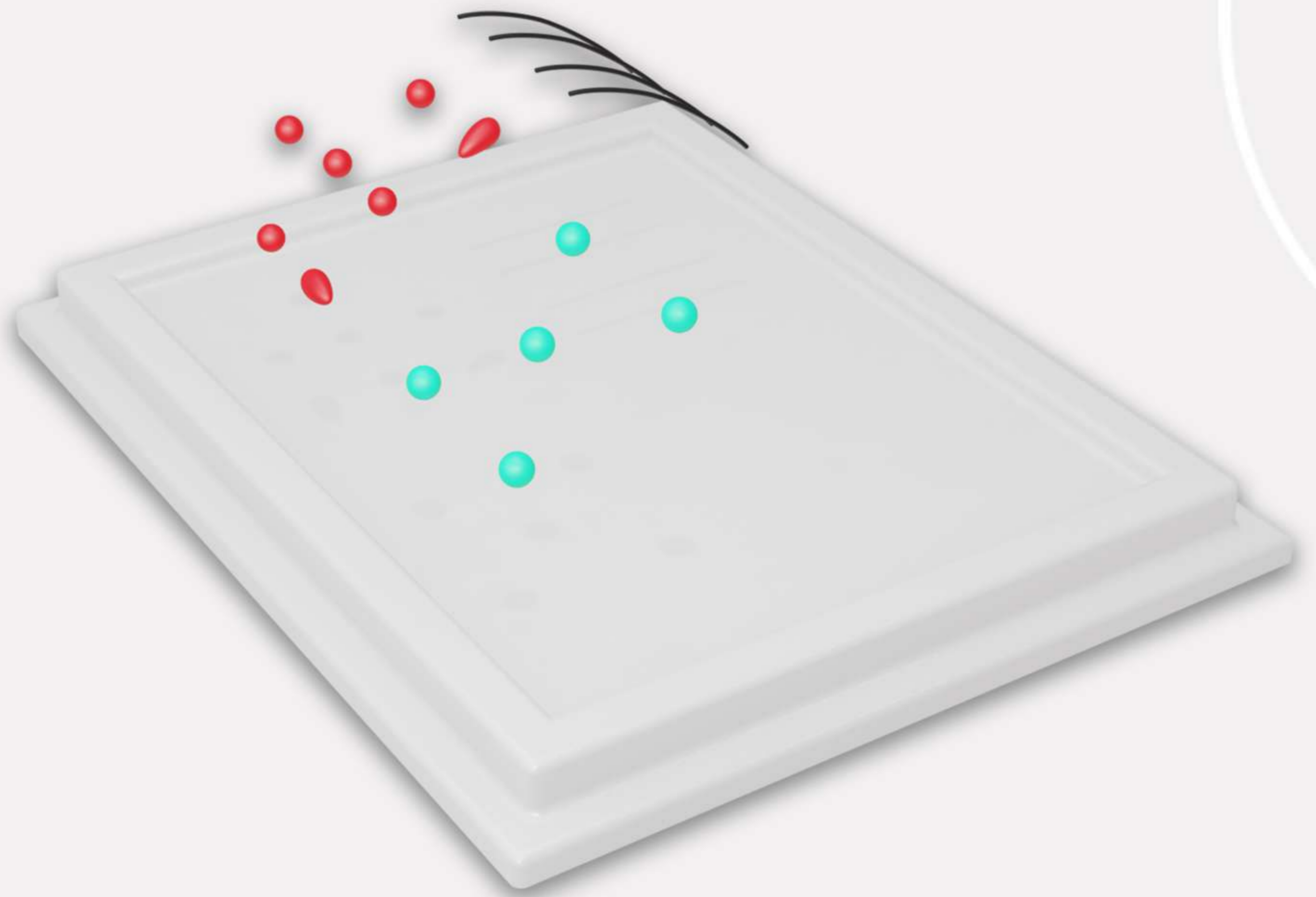




# ABOUT YOUR PRODUCT

INTERNAL STRUCTURES

- **Nylon threads**
- **Hyperechoic**
- **Anechoic**



B mode ultrasound images of Gphantom HOF.

<b>PRODUCT CODE</b>	<b>PBD050513</b>
<b>APPROXIMATE WEIGHT</b>	<b>700g</b>
<b>LENGTH</b>	<b>17cm</b>
<b>HEIGHT</b>	<b>4cm</b>
<b>WIDTH</b>	<b>13cm</b>



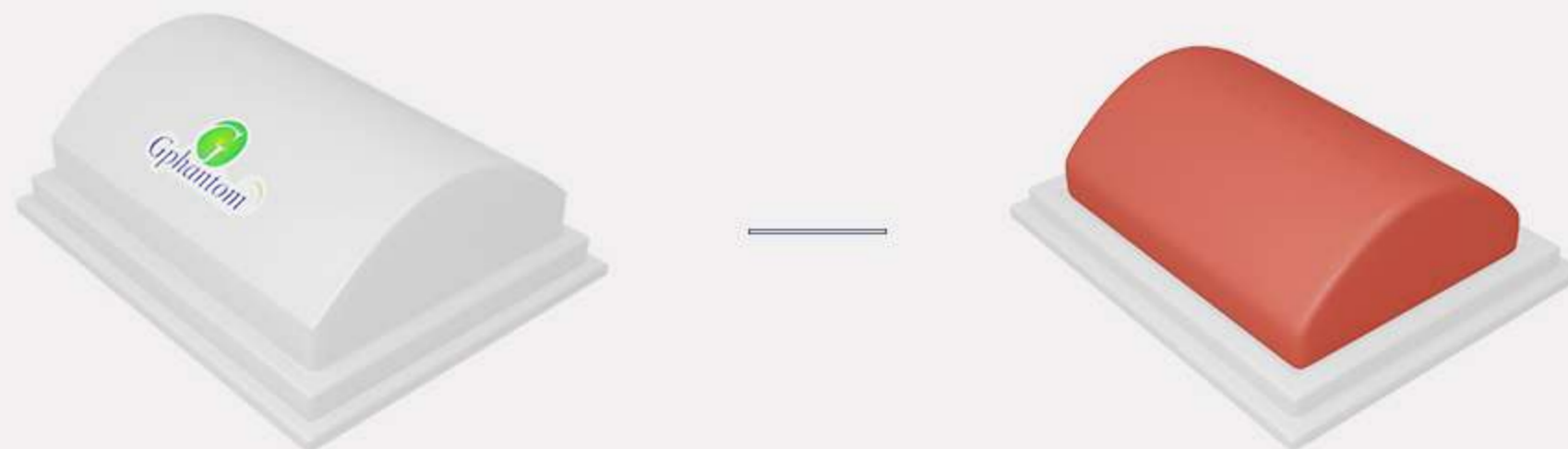
# HANDLING AND MAINTENANCE

- ① Always keep your product in a fresh place, sheltered from the sun.

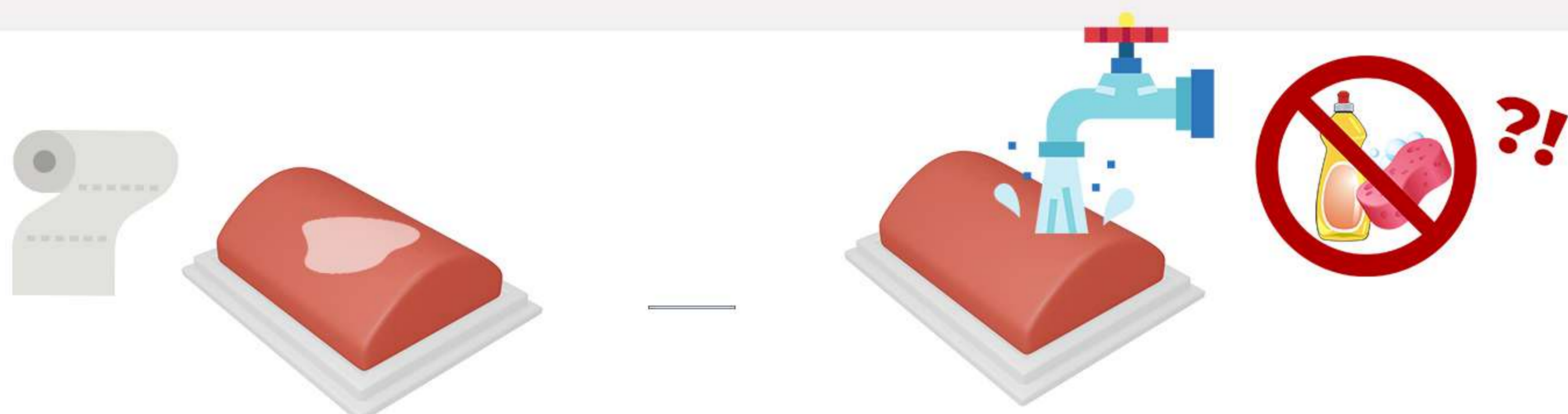


OBS: Expose your Gphantom to temperatures above 30°C (86°F), for long periods, can cause deformations and loss of properties;

- ② For training, remove the model from the packaging lid and fit the sites with venous structures;



- ③ After training, clean the product with a paper towel, removing excess gel for ultrasound and, then, wash it under running water without removing it from the base.



Do not store your Gphantom with excess gel, it may cause bad smell, thus reducing product durability.

Do not use detergents or sponges, as these damage the product!



# HANDLING AND MAINTENANCE

- ④ After cleaning, store your Gphantom according to instructions contained in item I;
- ⑤ Gphantom HOF is a product for educational purposes, intended, ONLY, for medical training. In case of doubt, contact us through our relationship channels.

# CONTACT US

For any questions or requests, contact us:



[contato@gphantom.com.br](mailto:contato@gphantom.com.br)



+55 1699848-2468