

INSTRUCTION GUIDE



GPHANTOM KNEE

LEARN. PRACTICE. IMPROVE.

INSTRUCTION GUIDE

Thank you for choosing **Gphantom**!

We are a company specialized in the development of solutions for medical training. If you want a specific model for your training, contact us. Here we will help you to handle and optimize the durability of your product.

Your **Gphantom Knee** is eligible for our Fidelity Program.

Consult conditions.



LEARN. PRACTICE. IMPROVE.



ABOUT YOUR PRODUCT

Gphantom Knee is an anatomical simulator of the anterior region of the knee intended for the training of ultrasound-guided procedures. Made of Gphantom material, which offers realistic tactile sensation and precise anatomy, the model simulates the bony structures (patella, tibia and femur), synovial bag and tendons of the quadriceps and patellar.

Gphantom Knee is indicated for practice, training and learning of ultrasound-guided procedures such as periarticular anesthesia, joint infiltrations, synovial fluid aspiration, biopsies, and others. Gphantom Knee is an indispensable tool for the training of healthcare professionals, allowing doctors and students to practice and improve their skills before applying them to real patients.

*NOTE: The model does not allow articulation of the bone structure.

Our needle mark recovery technology enables your Gphantom to recover up to 99% of the needle marks within 48 hours after training, when using needles with thicknesses of 21 G or less. For best use of this needle mark recovery technology, we recommend that you leave your product in a cool, dry place for 48 hours after each use;

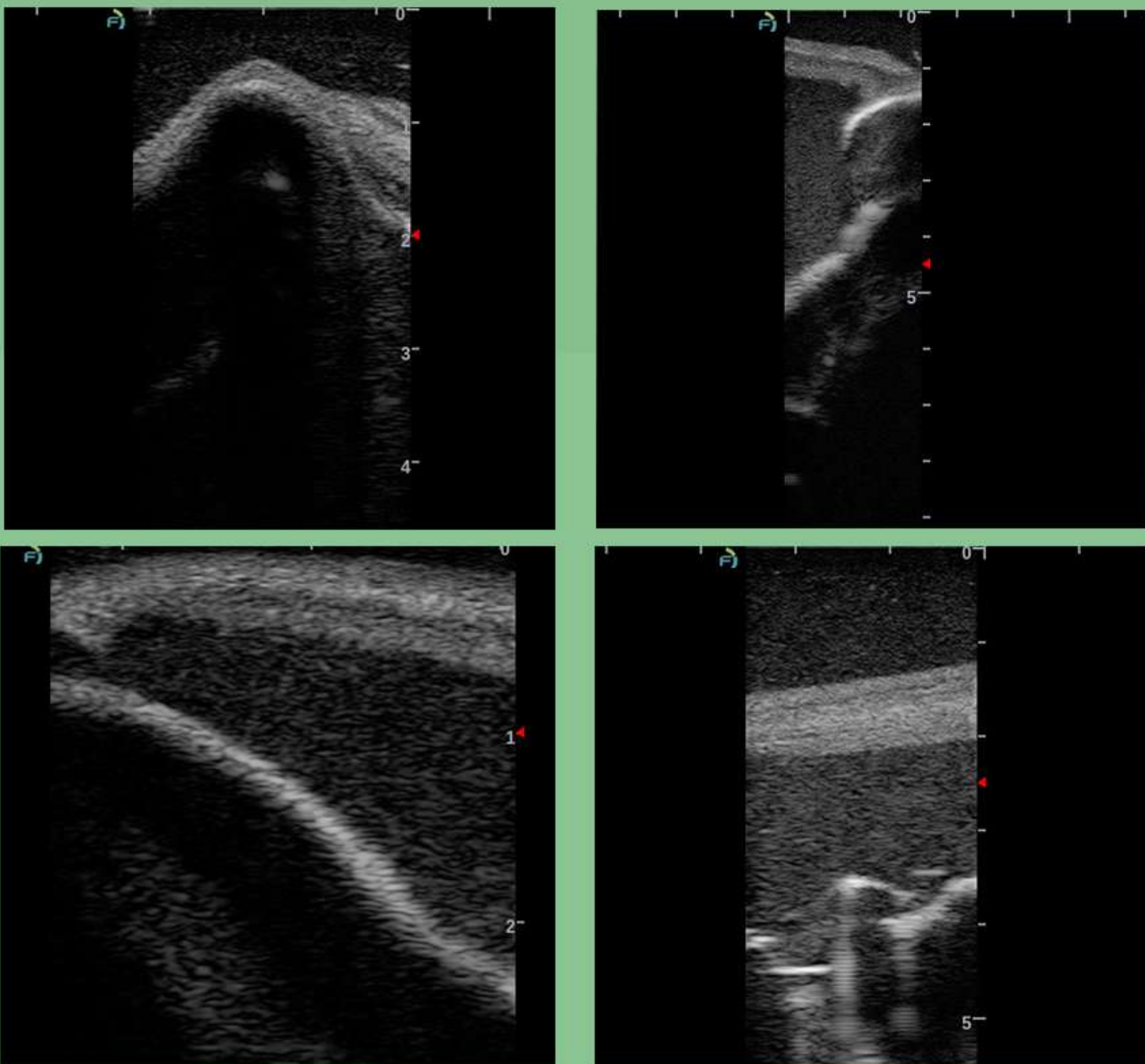
We recommend movements of up to 30 degrees in relation to the product surface, using needles such as the ones mentioned in the previous item. Avoid very long movements (large angles) after needle insertion, as these may shorten the life of your model. In addition, we do not recommend injecting or removing materials from your Gphantom during use.

If you have such a need, please contact us.



ABOUT YOUR PRODUCT

INTERNAL STRUCTURES



B mode ultrasound images of Gphantom Knee.

PRODUCT CODE	PBD050511
APPROXIMATE WEIGHT	3,7kg
LENGHT	15cm
HEIGHT	10,3cm
WIDTH	25cm



HANDLING AND MAINTENANCE

- ① Always keep your product in a fresh place, sheltered from the sun.



OBS: Expose your Gphantom to temperatures above 30°C (86°F), for long periods, can cause deformations and loss of properties;

- ② For training, remove only the packaging lid, keeping it in the original base;



- ③ After training, clean the product with a paper towel, removing excess gel for ultrasound and, then, wash it under running water without removing it from the base.



Do not store your Gphantom with excess gel, it may cause bad smell, thus reducing product durability.

Do not use detergents or sponges, as these damage the product!



HANDLING AND MAINTENANCE

- ④ After cleaning, store your Gphantom according to instructions contained in item I;
- ⑤ Gphantom Knee is a product for educational purposes, intended, ONLY, for medical training. In case of doubt, contact us through our relationship channels.

CONTACT US

For any questions or requests, contact us:



contato@gphantom.com.br



+55 1699848-2468